

YL558

特点 PRODUCT FEATURES

- 接触载荷能力高达2X50A
- 有保险丝装置设计
- 工作温度为-40 to +125°C。
- 多种安装方式。
- 防尘罩型和塑封型可供选择。

典型应用 TYPICAL APPLICATIONS

- ABS控制系统
- 主开关/电源继电器
- 鼓风机
- 车灯：车前灯、车后灯、雾灯
- 汽车报警器、冷却风扇
- 发动机控制系统



触点负载 CONTACT DATA

| | |
|------------------------------|--------------------------------|
| 型号 Model | YL558 |
| 额定负载(阻性) Rated load | 标准型 2×50A/14VDC 2×25A/28VDC |
| 最大切换电流 Max.Switching Current | 50A |
| 最大切换电压 Max.Switching Voltage | 30VDC |
| 最大切换功率 Max.Switching Power | 2×700W |

性能参数 GENERAL DATA

| | | |
|----------------------------|--------------------------------|--------------------------|
| 触点材料 Contact material | Silver Alloy | |
| 接触电阻 Contact resistance | 100mΩ Max. | |
| 吸合时间 Operate Time | 10msec. Max. | |
| 释放时间 Release time | 5msec. Max. | |
| 绝缘电阻 Insulation resistance | 100MΩ Min.(DC500V) | |
| 介质耐压 Dielectric strength | 触点与触点间 Between coil & contacts | AC 500V, 50/60Hz 1min. |
| | 触点与线圈间 Between open contacts | AC 500V, 50/60Hz 1min. |
| 抗振动 Humidity | 稳定工作 Functional | 10~55Hz, 双振幅 1.5 mm |
| | 损坏极限 Destructive | 10~55Hz, 双振幅 1.5 mm |
| 抗冲击 Shock Resistance | 稳定工作 Functional | 10G Min. |
| | 损坏极限 Destructive | 100G Min. |
| 寿命 Life | 机械寿命 Electrical Life | 10,000,000 次 (7,200次/小时) |
| | 电气寿命 Mechanical Life | 100,000 次(600次/小时) |
| 环境温度 Temperature Range | -40°C~-105°C(不结冰) | |
| 重量 Weight | 约147.0g | |

YL558

线圈参数 (at 20°C) COIL DATE

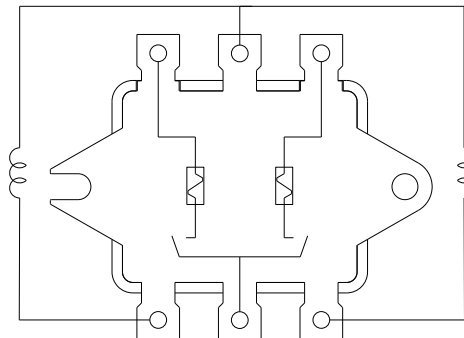
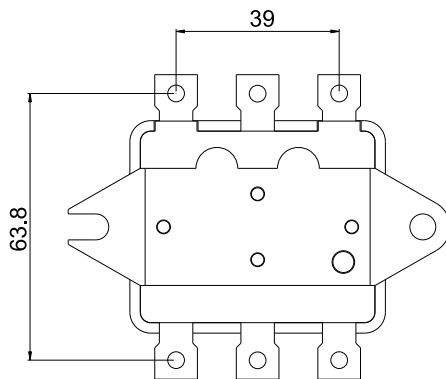
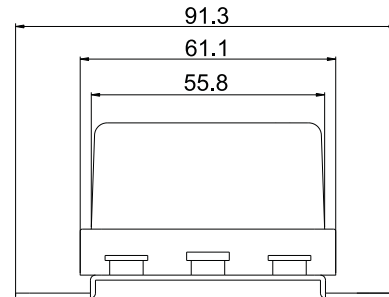
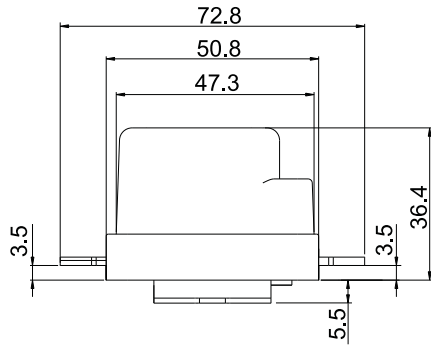
| Nominal Voltage 额定电压 (VDC) | Rated current 额定电流(mA) ±10%(Ω) | Coil Resistance 线圈阻值 ±10%(Ω) | Parallel resistance 并联电阻 (Ω) | Equivalent resistance 等效电阻 (Ω) | Operate Voltage 吸合电压 (Max.) | Release Voltage 释放电压 (Min.) | Max. permissible voltage 最大允许 电压 | Coil power 线圈功率 (W) |
|----------------------------------|--------------------------------------|------------------------------------|------------------------------------|--------------------------------------|---|---|---|---------------------------|
| 12 | 171 | 70 | - | - | 额定电压 的70% Rated voltage of 70% | 额定电压 的10% Rated voltage of 10% | 额定电压 的150% Rated voltage of 150% | 2.06 |
| 24 | 86 | 280 | - | - | | | | |

订货标记 ORDERING INFORMATION

YL558 -A- 12VDC

| | |
|----------------------------|---------------|
| 产品型号 Type | YL558 |
| 触点形式 Contact Form | A |
| 线圈规格 Coil Specification | 12VDC , 24VDC |

外形图、接线图 OUTLINE DIMENSIONS, WIRING DIAGRAM



接线图 (底视图)